



Policy and Procedure Governance Overview

Revised: July 2023

Table of Contents

GENERAL INFORMATION 3

MISSION..... 4

VISION 4

HISTORY..... 5

ORGANIZATIONAL CHART 6

GOVERNANCE STRUCTURE..... 7

 SIMULATION STEERING COMMITTEE CHARGE: 7

FINANCIAL SUPPORT AND SPACE 9

 TECHS FLOOR PLANS..... 11

 TECHS NORTH..... 11

 TECHS SOUTH 11

 TOURS OF TECHS..... 12

General Information

OFFICE LOCATIONS:

TECHS North
GGHSON Building – 302
MSC - 41004
210 N. Rick Francis
El Paso, TX 79905

TECHS South
PLFSOM Medical Sciences Building I – 3301
MSC - 21003
5001 El Paso Dr
El Paso, TX 79905

OFFICE HOURS: 08:00 – 17:00 Monday-Friday
(Closed on institutional holidays)

OFFICE PHONE: 915-215-6130

CONTACT INFORMATION:

Executive Director
Scott Crawford, MD – scott.crawford@ttuhsc.edu

Business Manager
[Joe Castañeda – jose.castaneda@ttuhsc.edu](mailto:jose.castaneda@ttuhsc.edu)

Director – Research
Stormy Monks, PhD, MPH – stormy.monks@ttuhsc.edu
Senior Director – Technical Operations
Hector Aranda – j.hector.aranda@ttuhsc.edu
Senior Director – Administration
Eddie Luevano – eduardo.luevano@ttuhsc.edu
Director – Education
Brian Wilson – brian.wilson@ttuhsc.edu

WEB PAGE: <https://el Paso.ttuhsc.edu/TECHS/>

TRAINING AND EDUCATIONAL CENTER FOR HEALTHCARE SIMULATION (TECHS)

Mission

To provide collaborative interprofessional training to the TTUHSC El Paso campus and community using best practices in education and advanced technology for students and healthcare providers to improve the quality of healthcare delivered and promote safe patient care practices.

Vision

Improve the quality of interprofessional learning, teaching, research, and delivery of health care through innovative, simulation-based education to enhance the quality and outcomes of patient care in the El Paso community and beyond.

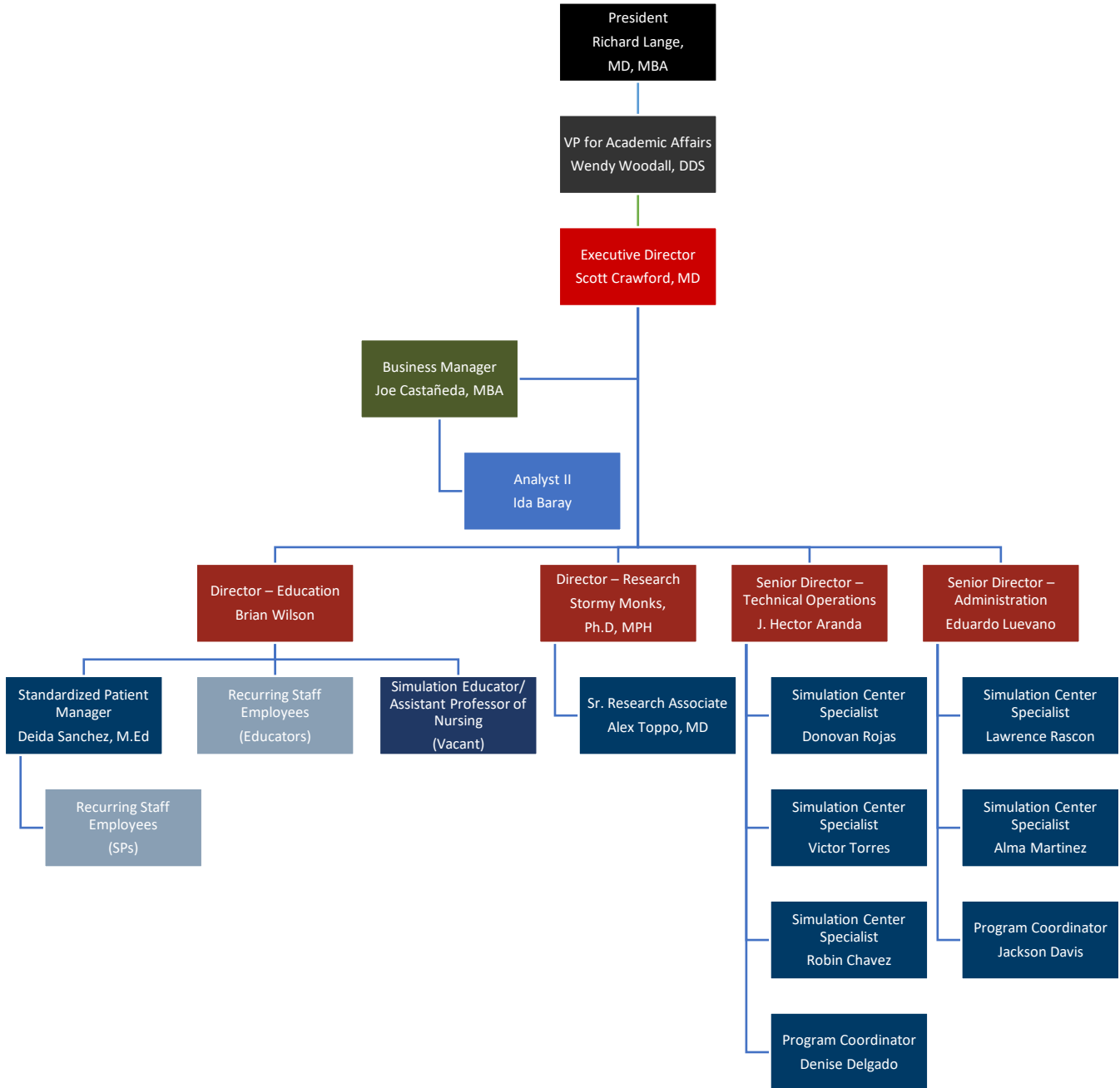
History

TECHS is the result of a program expansion and combination of three simulation programs on the TTUHSC El Paso campus in 2019. Simulation on the TTUHSC El Paso campus began as the Clinical Simulation and Teaching Laboratory (CSTL). Dr. Hoi Ho, the Associate Dean of Faculty Affairs & Development, established the Clinical Simulation and Teaching Laboratory (CSTL) in August 2004 to support the delivery of the curriculum for the Faculty Development Course (FDC) and the Advanced Teaching and Technical Writing (ATTW) course. CSTL was originally located on the third floor of the Ambulatory Care Clinic, Rm B3700. Due to advancing curricular need from the newly formed Paul L. Foster School of Medicine, the Center for Advanced Teaching and Assessment in Clinical Simulation (ATACS) opened in October 2008. The TTUHSC Board of Regents approved ATACS as a Center within TTUHSC in September 2009. Two other simulation programs were developed in 2012 to meet the growing needs of the campus; the Regional Simulation and Training Center (RSTC), to meet specific needs of graduate medical education; and the simulation program at the Gayle Greve Hunt School of Nursing. In November 2018, these three programs were put under the direction of Dr. Scott Crawford and TECHS became an official Center on the TTUHSC El Paso campus in February 2019.

TECHS continues to use state-of-the-art equipment, innovative learning methods, and expertise in simulation for the delivery of a highly-integrated and clinically-oriented curriculum for all learners on the TTUHSC El Paso campus. In addition, it collaborates with the office of Continuing Medical Education (CME), University Medical Center (UMC), El Paso Children Hospital (EPCH), New Mexico State University (NMSU), William Beaumont Army Medical Center (WBAMC), the University of Texas at El Paso (UTEP), and physicians and healthcare providers of the local community to improve the healthcare training in the El Paso region.

Organizational Chart

Training and Educational Center for Healthcare Simulation (TECHS)



Governance Structure

TECHS is a designated Center of Texas Tech University Health Sciences Center El Paso and is governed by the TTU system and Health Sciences Center El Paso. The director reports directly to the Vice President for Academic Affairs of TTUHSC El Paso. The director is assisted by a business manager and directors of the four primary center divisions: education, research, technical operations, and administration. Each director is responsible for his/her specific area.

Institution level review and guidance is through the TTUHSC El Paso campus simulation Steering Committee. The simulation Steering Committee was established February 2019, and replaced the previous Operations Committee that was established under ATACS.

In addition to the Simulation Steering Committee, the TECHS staff meet monthly to review operational issues and provide professional development and staff training.

Simulation Steering Committee Charge:

The Simulation Steering Committee shall provide guidance on operations and produce policy for review by the Vice President for Academic Affairs. The individuals will also provide their support in implementing simulation-based and innovative educational methods for healthcare education.

1. Membership shall include a representative for each of the identified primary stakeholder groups that use simulation-based education at TTUHSC El Paso. This includes:
 - a. Director – Training and Educational Center for Healthcare Simulation
 - b. Paul L. Foster School of Medicine (Pre-Clinical)
 - c. Paul L. Foster School of Medicine (Clinical)
 - d. Gayle Greve Hunt School of Nursing
 - e. Woody L. Hunt School of Dental Medicine
 - f. Graduate Medical Education
 - g. Faculty Development
 - h. Office of Continuing Medical Education
 - i. Community and Pre-Hospital Learners
 - j. Simulation-Based Research (Institutional Review Board)
 - k. Department of Emergency Medicine
 - l. Office of Inter-Professional Education
 - m. Vice President for Academic Affairs for TTUHSC El Paso
2. The members of this committee shall serve indefinitely as long as they continue to represent a department or group identified as a primary stakeholder of simulation-based education. Should an individual depart the represented department, school, or group, the head of that organization shall refer a new member to be approved by the committee.

3. Review of status as a primary stakeholder in simulation-based education will be performed annually and confirmed or amended by majority vote of committee membership.

Conduct of Business

1. Meetings will be held quarterly (a minimum) and up to monthly with attendance allowable by physical presence or electronic video conference (WebEx).
2. Meeting times will be confirmed at least one week prior to the meeting time and based on reported optimal availability of committee members.
3. Items may be added to the meeting agenda when sent via written communication one week prior to the scheduled meeting.
4. The meeting will be led by the Chair (TECHS Executive Director).
5. A quorum shall consist of half plus one members of the committee.
6. Each of the 13 members of the committee will be allowed one vote for all matters brought to a vote.
7. Minutes shall be kept for each meeting and distributed to attendees within one week following the meeting. Amendments or updates to these minutes shall be requested in writing and reported to the committee via electronic communication.
8. Items confirmed by vote will be reported to the Vice President for Academic Affairs for ratification.

Responsibilities

1. Participate by discussion, studies, advice, and counsel in the formulation and review of policies for TECHS
2. Vote on policies and procedures affecting campus utilization of the simulation center
3. Reporting to representative stakeholder groups about training options and requirements for use of the simulation center
4. Encouragement for appropriate use by representative stakeholder groups for use of simulation-based education
5. Identify and vote on matters related to the types of educational tools to be acquired and methods to support simulation-based education on the TTUHSC El Paso campus
6. Support the directors in the enforcement of daily operating policies within the respective representative stakeholder groups
7. Support the simulation center in the review of materials and acquisition of information required for accreditation by the Society for Simulation in Healthcare

Financial Support and Space

In 2007, Western Refinery Inc. generously donated \$500,000.00 to the establishment of the simulation center. The new facility occupied 13,000 square feet on the third floor of the Medical Education Building (MEB), now known as TECHS South (TS)

In 2015 following a generous donation by the Hunt family to establish the Gayle Greve Hunt School of Nursing, The School of Nursing and Regional Simulation and Training Center came onto campus to occupy the 2nd floor of the newly constructed School of Nursing Building, now known as TECHS North (TN). This facility added 12,000 square feet to the simulation infrastructure on the TTUHSC El Paso Campus. A remodel was performed in TECHS South between 2021 and 2022 to increase available learning space and increase flexibility of available rooms for multiple learner types. Despite having two physical spaces, TECHS is a single simulation center with shared staff and resources to support all learners needs on the campus and throughout the region.

Educational spaces:

TECHS North

- 6 high-fidelity A/V enhanced simulation rooms (8-person capacity)
- 3 eight-bed fundamental labs (16-person capacity)
- 4 small task training/debriefing rooms (6 to 8-person capacity)
- 1 simulated apartment space (15-person capacity)
- 1 medical supply/workstation room (5-person capacity)

TECHS South

- 16 standardized patient exam rooms (4-person capacity)
- 2 high-fidelity A/V enhanced simulation rooms (8-person capacity)
- 1 dividable six-bed immersive simulation space (24-person capacity)
- 3 medium multi-purpose/task training rooms (20 to 25-person capacity)
- 1 externally accessible VR simulator room (6-person capacity)
- 1 large multi-purpose/classroom (30-person capacity)
- 1 conference room/meeting space (12-person capacity)

Support spaces:

TECHS North

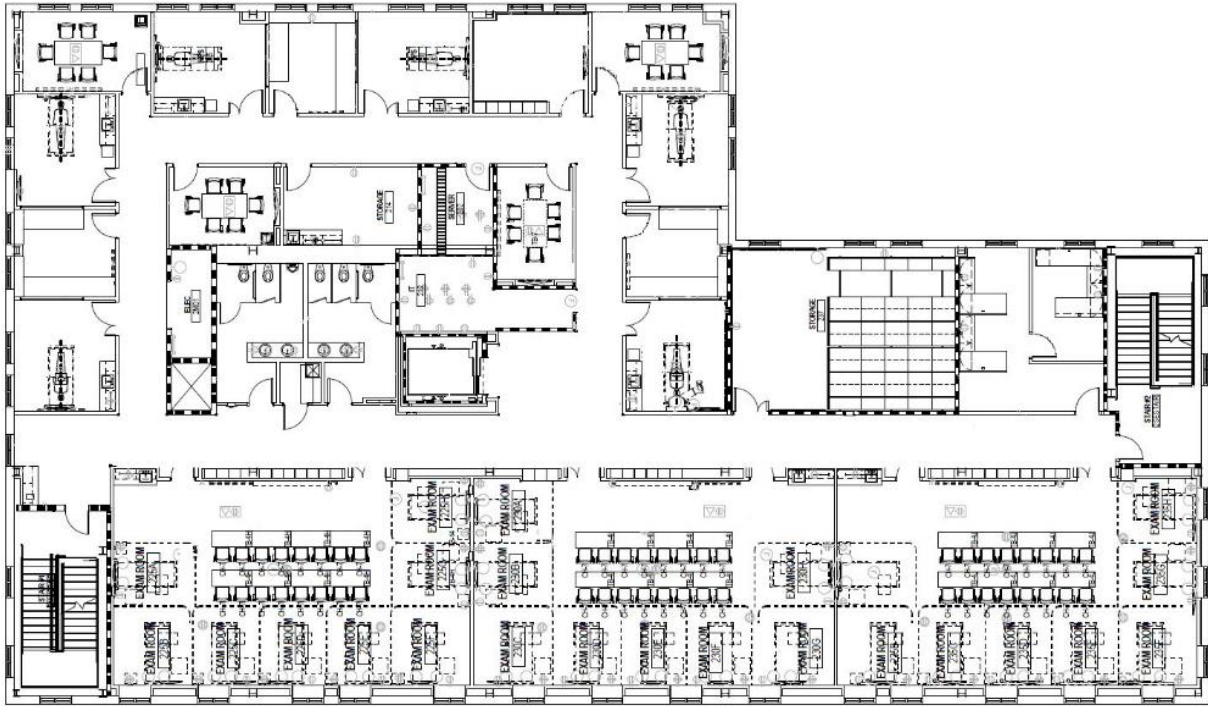
- 1 office (120 sq. ft.) for director
- 3 workstations in shared space for simulation staff (200 sq. ft.)
- 1 storage room (450 sq ft) with movable shelving for manikin and equipment storage
- 1 storage room (120 sq ft) for simulated clinical supplies

TECHS South

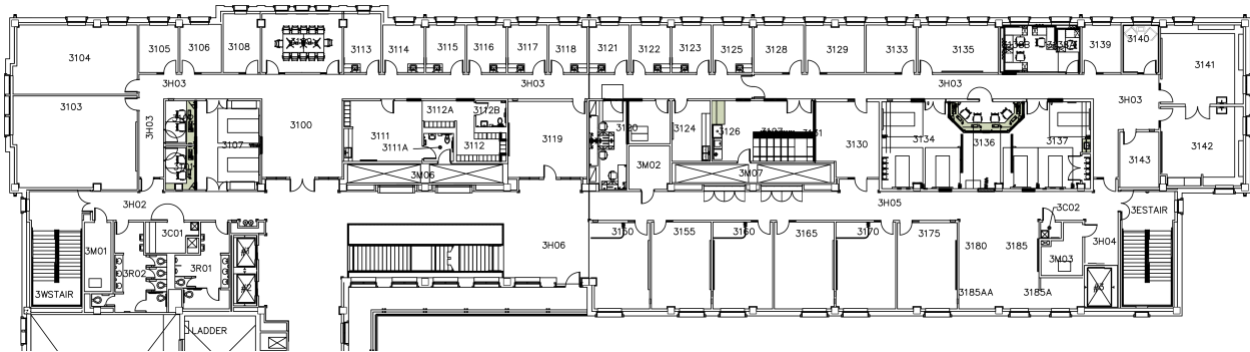
- 1 research and development laboratory (RDL) (225 sq. ft.)
- 1 reception/Waiting room (R 3100 (500 sq. ft.))
- 1 storage room (R 3126 (145 sq. ft.)) for medical supplies

- 2 storage rooms (117 - 130- sq. ft.) for storage of simulation equipment
- 1 kitchen (R 3124 (138 sq. ft.)) for staff members
- 2 restrooms
- 7 offices (110-138 sq. ft.)

TECHS Floor plans



TECHS North – School of Nursing Building (2nd Floor)



TECHS South – Medical Education Building (3rd Floor)

Tours of TECHS

Tours of the simulation center may be requested, subject to availability, using the online request form on the TECHS Website. Questions about tours can be addressed by emailing ElPasoTECHS@ttuhsc.edu or calling (915) 215-6130. No tours will be allowed in areas with graded activities or testing scheduled.

(https://elpasottuhsc.co1.qualtrics.com/jfe/form/SV_daQ5wbrxOF7QiNf)

